

Appendix 4: New Features in Version 3.5

Here is a brief listing of some of the features added since v3.2 was released. Some we added to later versions of v3.2 and some are new in Version 3.5:

- A major new feature is the concept of balancing the Front Lateral Load Distribution (FLLD) with the rear lateral load distribution. This concept can be used to find a “balanced” setup by adjusting spring and roll bar rates, and roll center heights. This is discussed in detail below.
- The ‘Rule of Thumb’ Suggestions for a good starting point for a setup now includes a suggestion for the rear roll center height. This is based on obtaining a recommended FLLD. See details below.
- The program can now do an angled, symmetric 4 link rear suspension, as used in the late model Mustangs and GM Metric chassis.
- Added the ability to do Camber Change and Roll Center Migration tables and graphs in the Front Suspension Screen.
- The Front Suspension Screen now calculates and displays 2 additional suspension characteristics: 1) Tire track change (tire scrub) as the front suspension goes through dive and roll. 2) Swing Arm lengths, the length from the tire center to its instant center.
- Changed the name of the Corner Jacking button at top right of main screen to Corner Weights. That’s because 2 new options have been added, letting you do Tire Diameter/Circumference changes and weight/ballast movement to check the affect on corner weights
- Screen colors are now more compatible with Windows XP.
- Added ability to save a vehicle file to or open a vehicle file from a floppy disk or CD, with a default drive letter from A to Z, selectable in Preferences.
- New Example files have been added, like GM Metric 4 Link Rear Suspension..
- Added 'Edit' options to the 'Calculate' menu item in the Engine Specs screen. The new Edit options let you factor the power curves up or down, or re-sort the table if there are blank rows or RPM increments out of order.

FLLD (Front Lateral Load Distribution)

When a car makes a turn, weight is transferred from the inside tires to the outside tires. However, how this weight transfer is split between the front and rear has a huge impact on the feel and handling of the car. If more weight transfer occurs on the front of the car, the outside front tire is being “overworked” more than the rear outside tire, causing less cornering traction at the front. This is more likely to produce understeer or a push. Very simplistically, if the Front Lateral Load Distribution is 50%, that means the

weight transfer split between front and rear is the same, and that should produce neutral handling. The book "Race Car Vehicle Dynamics" by Milliken and Milliken (with assistance by Terry Satchell) discusses this concept in detail. This concept is similar to the idea of balancing the front and rear roll angles presented in recent magazine articles.

Figure A7 shows the program displaying the FLLD for the current vehicle (currently 43.4%, which would tend to oversteer) during the transition between releasing the brakes and going to the throttle, at the apex of the turn (transition between braking and power). During braking and under acceleration, the weight transfer is much more complicated, and the FLLD concept can not be as easily applied.

Figure A7 New Options at Main Screen

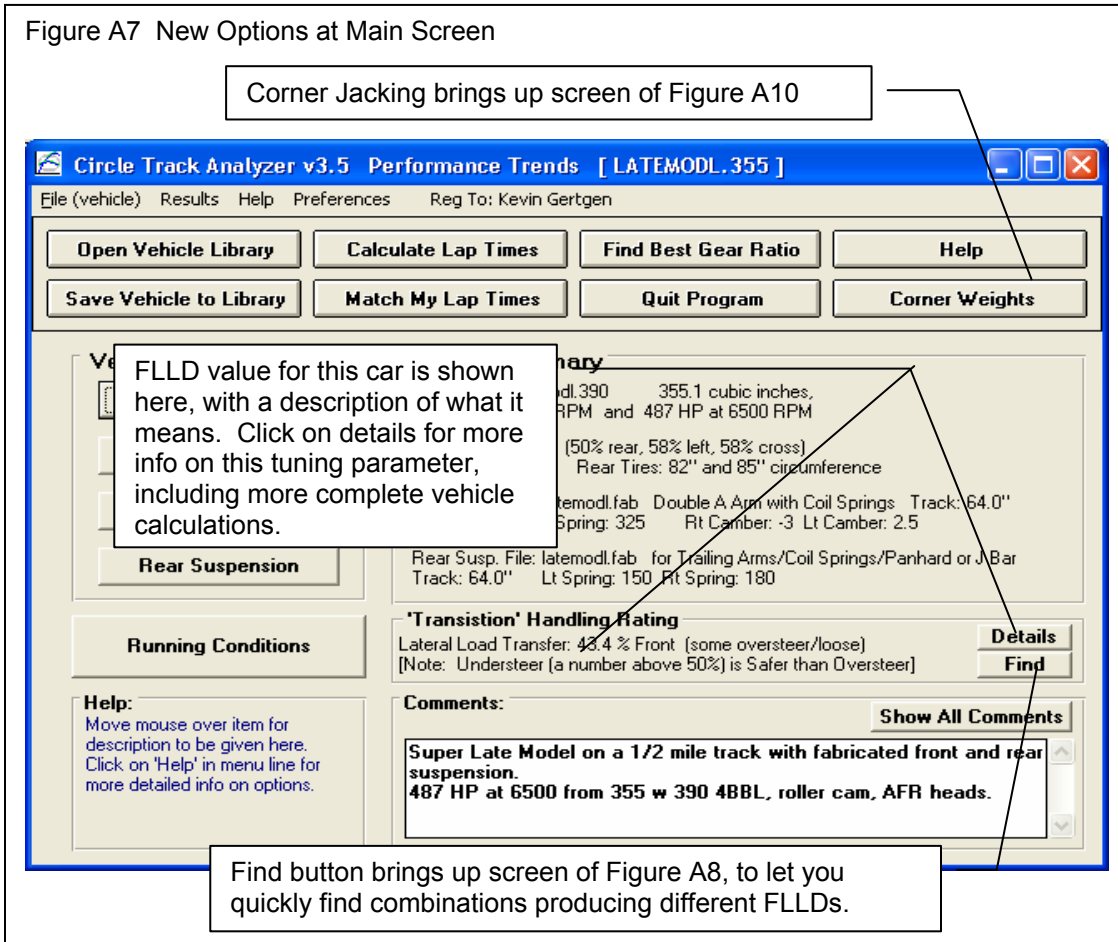


Figure A8 is displayed if you click on the "Find" button shown in Figure A7. This "Find FLLD" screen lets you find a certain Front Lateral Load Distribution (FLLD), which can be a good indication of how the car will handle at the apex or transition of the turn (no power, no braking).

Pick the 'Adjust' factor to tell the program what vehicle component(s) you want to adjust. Enter your desired 'For This FLLD', then click on the 'Find Now' button. For perfect theoretical 'Balance', the FLLD should be 50%. However, from experience, Milliken suggests a target 'starting point' FLLD value of 5 percentage points higher than the percent weight on the front tires (100% - Rear Wt % = Front Wt %). By default, the program will load in this value, but you can change it to anything else you want. Higher FLLDs tend to make the car tighter, with more understeer. Lower FLLDs tend to make the car looser, with more oversteer.

There are several ways to obtain a certain Front Lateral Load Distribution percentage.

Figure A8 Find Front Lateral Load Distribution
Screen obtained by clicking on Find button in Fig A7.

The screenshot shows a dialog box titled "Find Front Lat Load Dist" with the following fields and options:

- Current Front Lat Load Dist:** 56.8
- Current Rear Springs:** 150 / 180
- Current Nat Freq. F/R:** 1.75 / 1.68
- New Front Lat Load Dist:** 55.0
- New Rear Springs:** 196.4 / 235.7
- New Nat Freq. F/R:** 1.75 / 1.92
- Options:**
 - Adjust:** Rear Springs
 - For This FLLD:** 55.0
 - Message:** This change tends to make the car slightly looser.
 - Note:** The new settings you find using this feature may NOT be best your driving style and could be UNSAFE. Click on Help for more info.
 - Additional Note:** For this vehicle's Front Wt % of 50.0%, 55.0% (5% higher) would be a suggested setting.
- Buttons:** Find Now, OK/Keep, Help, Cancel, Print

Numbered callouts in the image provide the following instructions:

- 1) Pick what to Adjust. (Points to the 'Adjust' dropdown menu)
- 2) Select the FLLD you want. The program will default to a typical value based on your car's weight distribution. (Points to the 'For This FLLD' input field)
- 3) Click here to have program find new settings. (Points to the 'Find Now' button)
- 4) Click here to have program save these new settings. (Points to the 'OK/Keep' button)

The new settings you find using this feature MAY NOT BE THE BEST AND COULD BE UNSAFE. USE YOUR JUDGEMENT when making adjustments based on this concept.

To reduce the possibility of using very strange settings, the program will calculate the average front and rear natural frequencies for the springs. If these frequencies are significantly different than those typically used, the program will warn you. Typically, the front natural frequency will be in the range of 1.4 to 2.0 and the rear will be .1 to .5 points lower than the front.

For many vehicle combinations, the program can not find settings to match your requirements. Many times this is due to the Front or especially the Rear roll centers being too high. High roll centers transfer more weight laterally through the suspension linkages and less through the springs, making the springs and roll bar have less effect on this tuning factor. You may then want to have the program adjust the

Rear Roll Center to find the FLLD you desire. After you adjust the Rear Roll Center and keep this change (click on OK/Keep), then you can go back into this screen and try adjusting springs and/or roll bar and they are likely to have more affect.

If you find settings which you want to keep, click on OK/Keep and they will be loaded back to the vehicle specs screen. For the Front and Rear Roll Center Heights for some suspension types, you must make a mental note of this setting and go back into the Front or Rear Suspension Screen and try various setting to arrive at this height. The program can not make this change automatically for you.

Fig A9 Other Features using the FLLD Concept

At the top of the Analyze Suspension screen, these 3 reports are all improved using the FLLD concept.

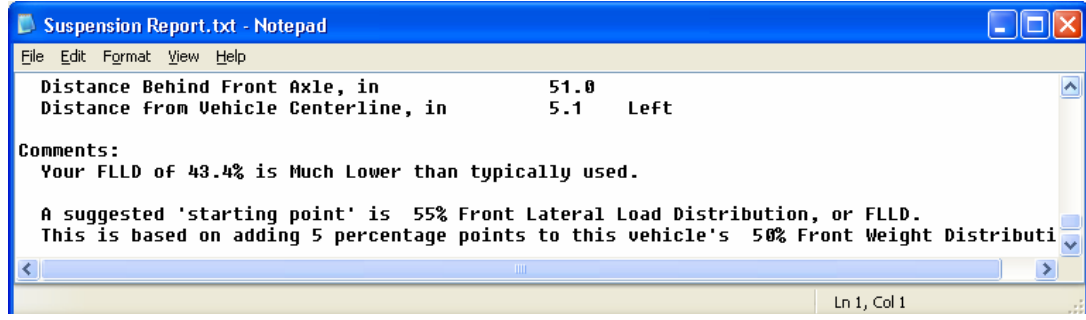
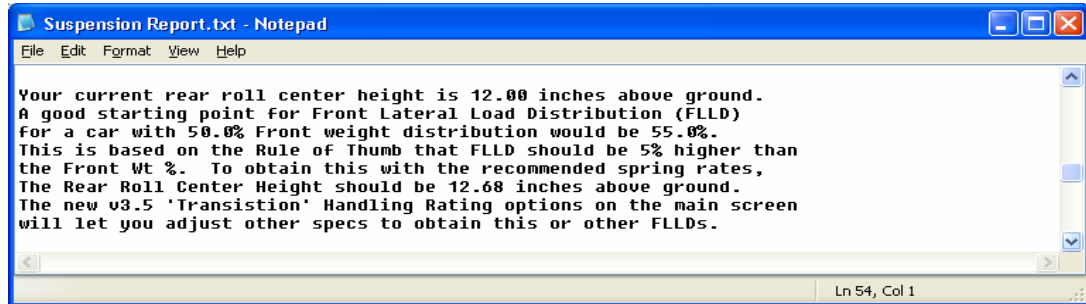
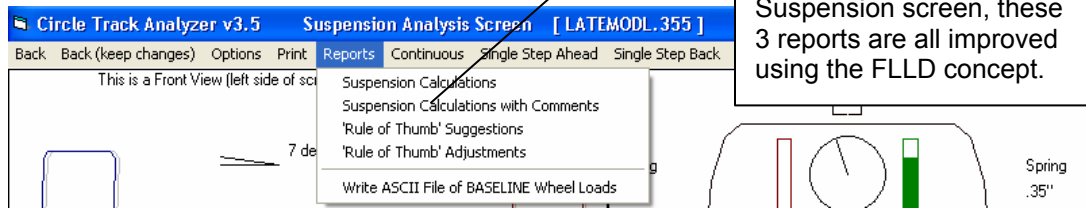


Figure A9 shows 2 reports which now also include references and suggestions based on balancing the FLLD.

Corner Weights

Figure A10 Corner Weight Screen from Clicking On Button in Fig A7

Two New Options in Version 3.5

Corner	Static Height (in)	New Height (in)	Static Lbs	New Lbs
Left Front	.00	.02	700	712.5
Right Front	.00	.27	700	687.5
Left Rear	.00	.14	924	911.5
Right Rear	.00	.11	476	488.5

Help Definition: Chose the type of weight change you want to make.

Important: The estimates made in this screen are based on several assumptions, two of the most important being the chassis is perfectly stiff and the tires are perfectly stiff.

The screen in Figure A10 is used to determine how static corner weights change as you make adjustments to the car. These adjustments include turning 'jacking screws' to adjust the preload on springs, changing tire diameter/circumference, and moving weight around like ballast. Click on one of the 3 tabs at the top to choose your option. The first tab, Jacking, is the same as it was in v3.2.

For most all inputs on this screen, click on the name or input box and its definition is given in the section at the bottom of the tab page.

For the Tire Change tab, choose which tire to change and which dimension you want to work with. The program will then display the Current Tire dimension from the Vehicle specs screen. You are allowed to

change this should it not be set exactly as you want. Then enter the New Tire dimension and see the effect on Cross Weight. Rear and Left percents are not affected by changing tire diameter.

For the Move Weight tab, choose the type of weight change, and the amount of weight to change. Then type in the Current Location of the weight and/or the New Location of the weight after the move. Cross, Rear and Left percents can all be affected by moving weight.

Click on Back (keep changes) at upper left of this screen to return to the main screen while keeping your changes to corner weights, tire sizes, vehicle weight, etc.

Front Suspension Screen

Figure A11 shows some of the new features for the Front Suspension Screen. Figure A12 shows an example of the new "Table & Graph" feature for calculating Roll Center "migration" for various amounts of dive and roll.

Figure A 11 New Front Suspension Screen Features

The screenshot shows the 'Front Suspension Specs' window with the following features highlighted:

- Table & Graph:** A new feature for calculating Roll Center migration, as explained in Figure A12.
- Swing Arm Length and Scrub:** Displayed for both Left (Lt) and Right (Rt) sides.

Lt Swing Arm	55.4
Rt Swing Arm	47.1
Lt Scrub	.092
Rt Scrub	-.207
- Other Specs:**

	Right	Left
Spring Length	10.98	10.98
Scrub Radius	6.0	6.0
Stc Camber, deg	-3	2.5
Dyn Camber, deg	-3.61	.60
Track, in	64.0	32
King Pin Angle	11.31	11.31
Spindle Angle	8.31	13.81
Roll Bar Rate, lb/in	250	
Roll Bar Length, in	50	
- Static Layout Dimensions:**

	Right (X)	Height		Left (X)	Height	
A	22	20	Upper Ball Joint	22	20	G
B	12.5	17	Upper Frame Pivot	12.5	17	H
C	25	5	Lower Ball Joint	25	5	I
D	7.5	5	Lower Frame Pivot	8.5	5	J
E	19	16.5	Upper Spring Pad	19	16.5	K
F	21.25	5.75	Lower Spring Pad	21.25	5.75	L
Length		Angle	Upper Arm Dim.	Length	Angle	
9.96		17.53		9.96	17.53	
17.50		.0	Lower Arm Dim.	16.50	.0	
- Show Dive & Roll:**
 - Yes
 - Dive, inches: 1
 - Roll, deg: 1.5
 - Draw: Big
- Help (definition):** Distance from car centerline to the center of ball joint on upper arm on Right side, in inches. For ease of consistent measurements for front and rear, use the center of the drivetrain (engine, trans, rear axle) as the car's centerline. p 31

Lt and Rt Scrub shows in Figure A11 is the amount the tire moves out from the center of the car as it goes through the amount of dive and roll you have specified.

Lt and Rt Swing Arm Length is the distance from the center of the wheel/tire to its instant center. Long lengths indicate that camber will change little with dive and/or roll (Camber Gain will be low).

Table & Graph

If you click on Table & Graph at the Front Suspension Screen, you will obtain a screen similar to the top picture in Figure A12. This screen shows you 2 tables of Roll Center Height and Roll Center Left (distance left of center) for a set on Dive and Roll combinations. Distances right of center are labeled as “negative”. (Negative is not “bad”, it is just a way to indicate right, the opposite of Left.) You could have also chosen to do a Camber Table. Then the top table would be for the Right side and the bottom would be for the Left side.

You can also select to have a Baseline condition displayed in the Table (Show Baseline Data). This is useful to compare 2 different suspension layouts. A Baseline is some previous condition which was shown in the Table.

To save the current Table as a Baseline, click on 'Baseline', then 'Save This Data as Baseline'. The program will ask you for a Comment to describe the Baseline condition. This Comment will be printed with the Table when you print it if you are Showing the Baseline condition. This comment can also be edited by clicking on 'Baseline' and then 'Baseline Comment'.

After saving a baseline Table, you could close the Table by clicking on Back in the Menu Bar, make a change in the suspension and create the table again by clicking on Table & Graph. You would produce a Table like in the upper left of Figure A12.

Click on the Options menu item and select 'Specs for Table Rows & Columns' to change the Dive and Roll increments, and which is used for rows and which is used for columns. You will obtain the menu shown in the upper right of Figure A12.

As you change the specs in this menu, the Preview at the bottom changes to show what the Roll and Dive increments, and the general layout of the Camber Table will look like. The program allows only up to 10 rows and 11 columns. Your inputs may be changed if a combination produces more than these limits. When you are satisfied with the Preview, click on OK/Exit. Click on Cancel to close this menu and return to the original Table layout.

Note: If you change the Table specs, any previously saved baseline conditions will be lost because that baseline has different increments for columns and rows, which would not match up to the new increments you have selected.

Figure A 12 Roll Center Table and Graph

Click on Graph to make graph as shown below.

RC Height	Roll, degrees						
Dive, inches	-3.00	-2.00	-1.00	.00	1.00	2.00	3.00
-2.00 (new)	6.2	6.2	6.2	6.2	6.3	6.3	6.3
-2.00 (base)	5.5	5.5	5.5	5.5	5.5	5.5	5.5
Difference	.7	.7	.7	.7	.8	.8	.8
.00 (new)	3.4	3.5	3.5	3.5	3.5	3.6	3.6
.00 (base)	2.0	2.0	2.0	2.0	2.0	2.0	2.0
Difference	.6	.7	.7	.7	.7	.8	.8
2.00 (new)	1.1	1.1	1.1	1.1	1.1	1.2	1.2
2.00 (base)	.5	.4	.4	.4	.4	.4	.5
Difference	.6	.7	.7	.7	.7	.8	.7

RC Left	Roll, degrees		
Dive, inches	-3.00	-2.00	-1.00
-2.00 (new)	-1.3	-.7	-.6
-2.00 (base)	-1.7	-1.1	-.6
Difference	.4	.4	.6
.00 (new)	-2.2	-1.5	-.7
.00 (base)	-1.9	-1.3	-.6
Difference	-.3	-.2	-.1
2.00 (new)	-5.4	-4.8	-4.1
2.00 (base)	-.2	-.3	-.2
Difference	-5.2	-4.5	-3.9

Click on Options for screen to the right to choose increments for dive and roll for table.

Caliber Table Settings

Data in Rows: Dive, inches

Starting Dive, inches: -2

Ending Dive, inches: 2

Dive Step Size: 2

Starting Roll, degrees: -3

Ending Roll, degrees: 3

Roll Step Size: 1

Preview:

Roll

Dive -3 -2 -1 0 1 3

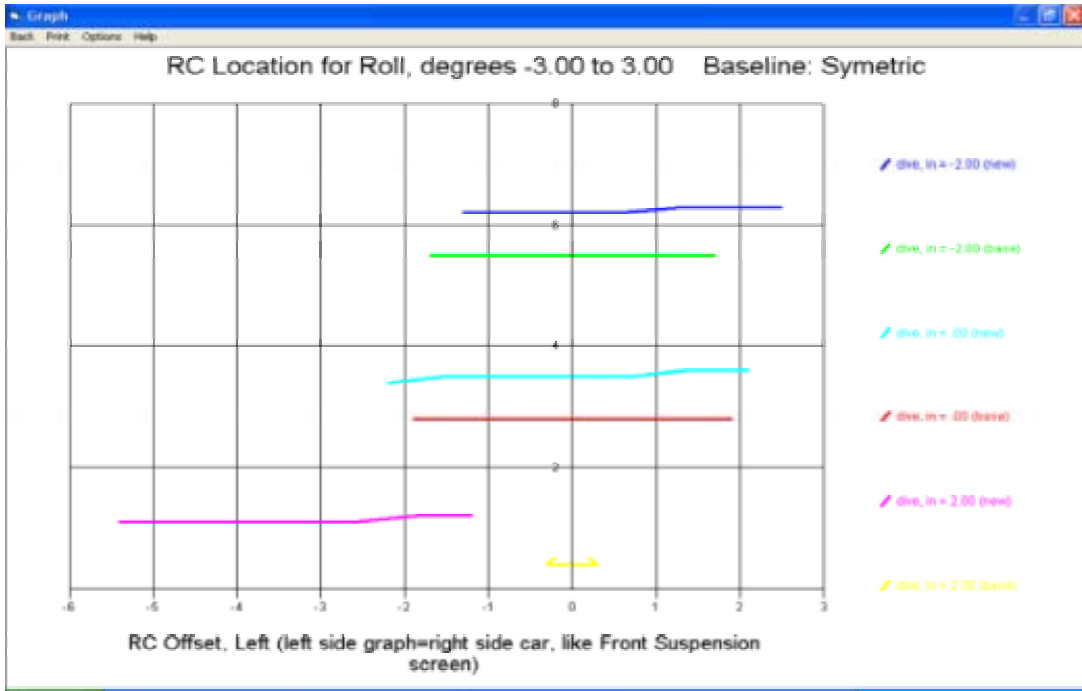
-2

0

2

3 rows x 7 columns. (Maximum of 10 rows by 11 columns.)

OK/Exit Help Cancel Print

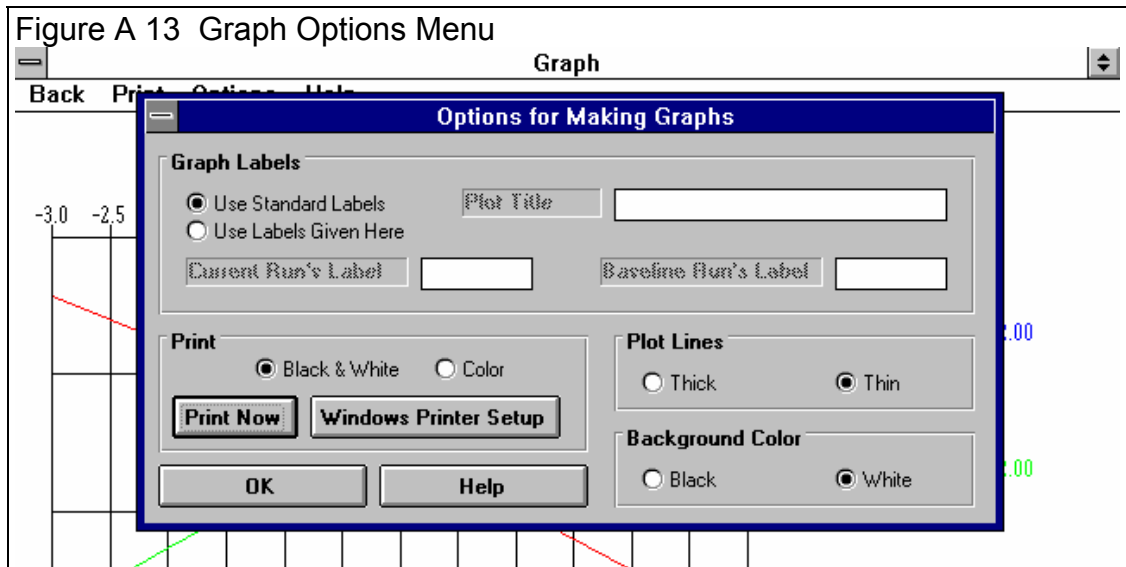


you highlight various rows by clicking and dragging the mouse in the top Table for the Right Side. These selected (highlighted) rows, AND the corresponding rows in the bottom table for the Left side, will be graphed. If you have selected more data than the Graph can hold, you will be told and the top and bottom rows only of what you've selected will be graphed.

This screen graphs of Camber in degrees on the vertical Y axis versus either Roll or Dive on the horizontal X axis. The data graph here is based on what was highlighted in the Camber table when you clicked on the Graph menu item. Data is always graphed for the Left side as well as the Right side for whatever conditions you have selected (highlighted).

If you make graphs of Roll Center Height and Roll Center Left, as done if Figure A12, this graph will show the actual location of the roll center and how it moves. Height is on the vertical Y axis and Left is on the horizontal X axis.

Read the labels in the "legend" at the right side of the graph to see which lines are which colors. The graph is always "autoscaled" which means the program picks the scales for drawing it to display all data with good detail. Print the graph on your printer using your Windows default printer by clicking on the "Print" menu command. You can change settings, labels and Windows printer setup by clicking on the "Options" menu command. See Figure A13. You can return to the Camber Table screen by clicking on the Back menu command.



The Graph Options screen is divided into 4 sections.

The first section is called "Graph Labels": Click on "Use Standard Labels" for standard labels to be printed on the graph. Click on "Use Labels Given Here" and the program will use the labels

which you can enter or change. Click on any of the 3 text boxes and type in your chosen titles or labels.

The second section of the Graph Options is called "Print": Click on "Black and White" or "Color" to tell the program how to print the graph. Unless you have a color printer, you should choose "Black and White". The program always graphs in color on the computer screen. Click on the "Print Now" button to print the current plot on the printer, the same as selecting the "Print" menu command. Click on the "Windows Printer Setup" button to see the current printer selection or select a different printer for printing the graph.

The third section lets you pick the line thickness for the "Plot Lines", either thick or thin.

The fourth section lets you pick the color for the "Background Color" of the graph, either black or white.

Click on OK to return to the Graph Screen with your changes in effect.

Rear Suspension Screen

Figure A14 Symmetric, Angled 4 Link Rear Suspension

Suspension Specs [Metric 4 Link]

Back File Comments Help

Suspension Specs

Type: Symetric Angled 4 Link

	Left	Right
Spring Rates, lb/in	200	200
Tire to Centerline, in	30.0	30
Spring to Centerline, in	17	17
Spring Angle, deg	0	0
Spring to Axle, in	0	0

	Link AB	Link DE
Axle to Front Pivot, in	11.5	19
Axle to Rear Pivot, in	1	0

4 Link Side View

	To C/L	Ht	To C/L	Ht
A	4.5	17	D	22
B	13.5	16.5	E	17
				8
				8.5

Front of car →

Help
Click on down arrow button to pick a Typical Example of a rear suspension, or a general design to 'Use Specs Below' where you can enter your own specs. p 51

Left Side **Top View** **Right Side**

Rear View

Wheel Rates
Bump = 200
Roll = 113

Wheel Rates
Bump = 200
Roll = 113

Roll Center Ht: 16.7 Roll Center Right: 0.0

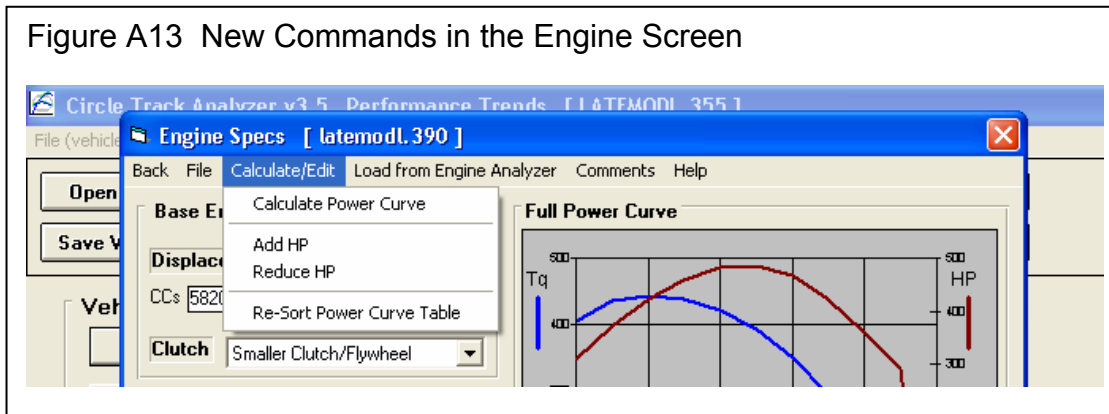
New Type is available of Symetric Angled 4 Link

The new Suspension Type of Symmetric Angled 4 Link lets you find the roll center and roll stiffness of rear suspensions found in several vehicles, including GM Metric and later model Mustangs. Because it is only for symmetric layouts, you will only enter measurements for 1 side, and they will be used for both sides.

Engine Screen

Edit options have been added to the Calculate menu item to allow factoring the power curve up or down by a certain percent. The option is also available to “clean up” the power curve should you enter RPM increments out of order, or leave blank rows in the data.

Figure A13 New Commands in the Engine Screen



Appendix 5: New Features in Version 3.6

In Version 3.6 we've broken the Circle Track Analyzer into 3 different programs:

- Roll Center Calculator (RCC), which does the Front Suspension only.
- Roll Center Calculator Plus (RCC+), which does the Front Suspension and Rear Suspension, plus some front to rear "balance" analysis.
- The full Circle Track Analyzer (CTA), which does everything the old Circle Track Analyzer v3.5 did plus all these new features.

Here is a listing of the major new features added in Version 3.6 of full Circle Track Analyzer. Note that unless these new features specifically mention Roll Center Calculator, they do NOT apply to the Roll Center Calculator versions.

- The program now lets you enter a rear anti-roll bar. This input changes the front to rear roll stiffness, which affects most all of the handling ratings the program will calculate. RCC+, CTA.
- The program now lets you enter both a front and rear aerodynamic Lift Coefficient. Many times when you make an aerodynamic adjustment, you only affect 1 end of the car, like a rear spoiler adjustment. This adjustment not only affects overall "road holding" ability of the car, and therefore lap times, it also affects handling, the tendency to oversteer or understeer. CTA only.
- The program has a new Calculation Menu utility called "Adjust" for the front and rear Lift Coefficient and Drag Coefficient. You can choose a type of vehicle modification, enter the starting and modified condition, and the program shows you how the current lift and drag coefficients would change. This way you have an estimate of how certain vehicle modifications would affect the entire aerodynamics of the vehicle. CTA only.
- You can now enter more details about the front suspension, both for Double A Arms and McPhearson Strut suspensions. This added detail lets you locate both the front and rear A Arm mounts on the frame, and the angle of the McPhearson Strut when viewed from the side. These details let the program more precisely locate where the A Arm attaches to the frame in the 2 dimensional layout. They also determine how much Anti-Dive is built into the front suspension. Anti-Dive is the vehicle's resistance to diving the front end due to braking. Reasonable starting points for Anti-Dive for most all circle track asphalt cars in the 2000-3500 lb range are 10% on the Right Front and 5% on the Left Front. RCC, RCC+ and CTA.
- We've taken the concept of balancing the Front Lateral Load Distribution (FLLD) with the rear lateral load distribution a step farther. We've developed a Performance Trends exclusive called Oversteer/Understeer rating. It is based on how evenly the tires on the 4 corners of the car are loaded. If they are equally loaded left to right, and loaded front to back the same as the front to back weight distribution, we say that is a 0 Oversteer rating, or Neutral handling. Several

factors go into this rating, including banking forces, aerodynamic forces, dynamic weight transfer left to right, and front to back. CTA only.

- You can display the actual wheel loads for the car in “transition” on the track, at the point where you are neither braking or accelerating. It is at this point where the program determines the Oversteer/Understeer rating described above. For this “transition” condition, you can also save a “baseline” condition for comparison to some modification you have made to the vehicle. This way you can actually see the effect you modifications will have on wheel loads and the handling rating. CTA only.
- The oversteer/understeer rating is displayed as the car goes around the track on the Analyze Suspension screen. By saving a condition as a Baseline, you can compare your current conditions to a saved Baseline. This is the same as what is described in the preceeding paragraph except it is done at all locations on the track. This is also the same as the “Analyze Suspension” feature in previous versions, except now it includes the front and rear aerodynamic downforce, and the handling rating. CTA only.
- The ‘Rule of Thumb’ Suggestions for a good starting point for a setup now includes suggestions for a “Big Bar Soft Spring” (BBSS) setup. The BBSS theory is you use significantly softer front springs to better handle bumps in the track, and to lower the car in the corners for less aerodynamic drag and less weight transfer inside to outside. Then to counteract the additional roll these soft springs would allow, the anti-roll bar is stiffened significantly. Other adjustments include a much stiffer than typical right rear spring, paying more attention to Anti-Dive and shock valving. CTA only.
- Improved the Tire Scrub calculation for a Double A Arm front suspension (how much sideways tire movement there is during dive and roll). RCC, RCC+ and CTA.
- Refined the calculations for suggested spring rates for “Starting Point Suggestions” report. CTA only.
- Program is now more compatible with Windows Vista and Windows 7. RCC, RCC+ and CTA.
- Program is now better at remembering a printer or printer orientation changes. RCC, RCC+ and CTA.
- Program is now better at find newer versions of Adobe Acrobat and Reader, and other PDF compatible programs for viewing the User’s Manual. RCC, RCC+ and CTA.

Figure A15 Rear Anti-Rollbar

Suspension Specs

	Left	Right
Spring Rates, lb/in	150	180
Tire to Centerline, in	32.0	32.0
Spring to Centerline, in	25.0	25
Spring Angle, deg	0	0
Spring to Axle, in	0	0
Axle to Front Pivot, in	22.2	22.2
Pnhd Bar to Centerline, in	20	20
Panhard Bar Heights, in	17	17

Roll Bar

Roll Bar: Yes
Rate lb/in: 200
Roll Bar Length, in: 38
Axle Mount, Ahead of Axle, in: 2

Help

The distance ahead of the rear axle where the anti-roll bar attaches to the axle/trailing arm assembly via a flexible link. If the anti-roll bar attachment is bolted solid to the axle/trailing arm assembly, enter 0.

Roll bar drawn to your specs here in green.

Set to Yes and you can enter rear roll bar specs.

Click here to Calculate a roll bar rate from other inputs

Find Front Lat Load Dist

Current Front Lat Load Dist: 38.9
Current Rear Roll Bar: 200
Current Nat Freq, F/R: 1.77 / 1.62
New Front Lat Load Dist: 41.0
New Rear Roll Bar: 98.38
New Nat Freq, F/R: 1.77 / 1.62

Options

Adjust: Rear Roll Bar
For This FLLD: 41

This change tends to make the car slightly tighter than its current setup.

Note:
The new settings you find using this feature may NOT be best your driving style and could be UNSAFE. Click on Help for more info.
For this vehicle's Front Wt % of 50.0%, 55.0% (5% higher) would be a suggested setting.

You can also find a rear roll bar rate to give a desired handling rating (Front Lateral Load Distribution, FLLD)

Figure A16 Front and Rear Aerodynamic Lift Coefficients

Vehicle Specs

General Vehicle Specs

Total Weight with Driver, lbs: 2800

Rear %: 50 Clc
Left %: 58 Clc
Cross %: 58 Clc

Corner Weights: 700 | 700

Height of C.G., in: 17 Clc
Wheelbase, in: 102
Rear Axle Ratio: 5.5 Clc
Rear Axle Type: Standard Duty

Transmission

Type: Std Duty Manual
Ratio of Trans Gear Used: 1

Rear Wheel/Tire Specs

Type: Typical Racing Tire (average traction)
Avg Wheel & Tire Wt, lbs: 40
Circumference, in: Left 82 Clc, Right 85 Clc
Stagger, in: 3.0
Tread Width, in: 10 Clc
Traction Factor, %: 90 Clc

Aerodynamics

Type: Use Specs Below
Drag Coefficient: .42
Lift Coefficient, front: .05
Lift Coefficient, rear: 0
Frontal Area, sq ft: 21 Clc

Adjust

Help: The weight of the vehicle with the driver in pounds. p 20

Back Help Print Printer Setup

Click on the Adjust button for the screen shown below.

Program now has both a front and rear lift coefficient, to split the aerodynamic down force between the front and rear tires.

Calc Aero Adjustments

Drag Coef Change: .011
Lift Coef Change, front: .003
Lift Coef Change, rear: -.030

Current Condition

Deck Spoiler Length: 45
Deck Spoiler Height: 6
Angle (0=flat, 90=up): 30

New Condition

Deck Spoiler Height: 6
Angle (0=flat, 90=up): 45

Notes:
This adjustment is based

Use Calc Value Help Cancel Print

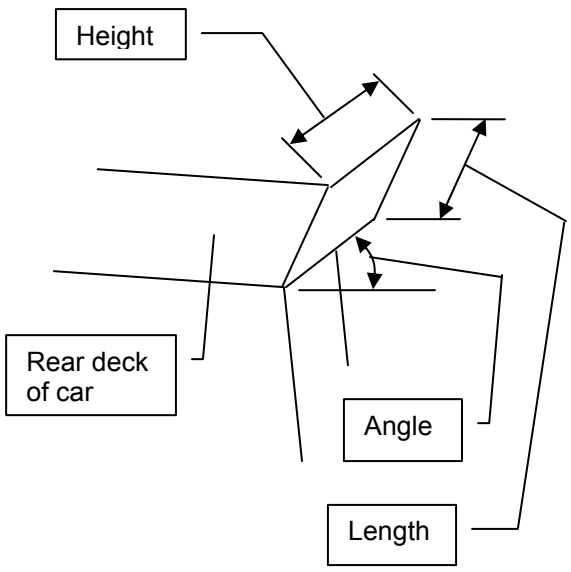


Figure A17 More Front Suspension Details

Front Suspension Specs [later]

Back File Options Edit Suspension Type Shim Table & Graph Comments Help

A Arm Mounts Details

	Right (X)	Height	Depth
a	12	17.5	6
b	13	16.5	6
c	12.5	17	0
d	12.5	17	0
Load			
e	7.5	5	12
f	7.5	5	-3
g	7.5	5	0
h	7.5	5	0
Load			

Calculated Mount

	Right (X)	Height	Depth
o	7.5	5	0
p	8.5	5	0

Current Mount

Calculated Mount

	Right (X)	Height	Depth
o	7.5	5	0
p	8.5	5	0

Current Mount

Anti-Dive: 14.6

Anti-Dive: 5.8

Close this screen

Calculated Anti-Dive

Arrows showing front of car.

Static Layout Dimensions

	Right (X)	Height		Left (X)	Height	
A	22	20	Upper Ball Joint	22	20	G
B	12.5	17	Upper Frame Pivot	12.5	17	H
C	25	5	Lower Ball Joint	25	5	I
D	7.5	5	Lower Frame Pivot	8.5	5	J
E	19	16.5	Upper Spring Pad	19	16.5	K
F	21.25	5.75	Lower Spring Pad	21.25	5.75	L

Hide Details

	Length	Angle		Length	Angle
	9.96	17.53	Upper Arm Dim.	9.96	17.53
	17.50	.0	Lower Arm Dim.	16.50	.0

Help (definition)

Click here on Show Details button to open screen shows above

Enter both measurements for both front and rear attachment points on frame.

The calculated 2-D mounting point (used by program) is shown here, with the current 2-D mounting point used by the program from the screen below.

Click here to use these new 2-D points in screen below

Figure A18 Oversteer/Understeer Rating

front and rear suspension.
487 HP at 6500 from 355 w 390 4BBL, roller cam, AFR

'Transition' Handling Rating for 7 deg Banking
 'Classic' Lateral Load Transfer: 38.9 % Front (HEAVY Oversteer/loose)
 Note: Understeer (a number above 55.%) is Safer than Oversteer
 Click on 'Show Dynamic Handling' to see corner weights in 'Transition' and a more detailed handling analysis, which includes cross weight and aerodynamic effects.
 Click on 'Show Dynamic Handling' to update rating, currently = 2.74 % UnderSteer

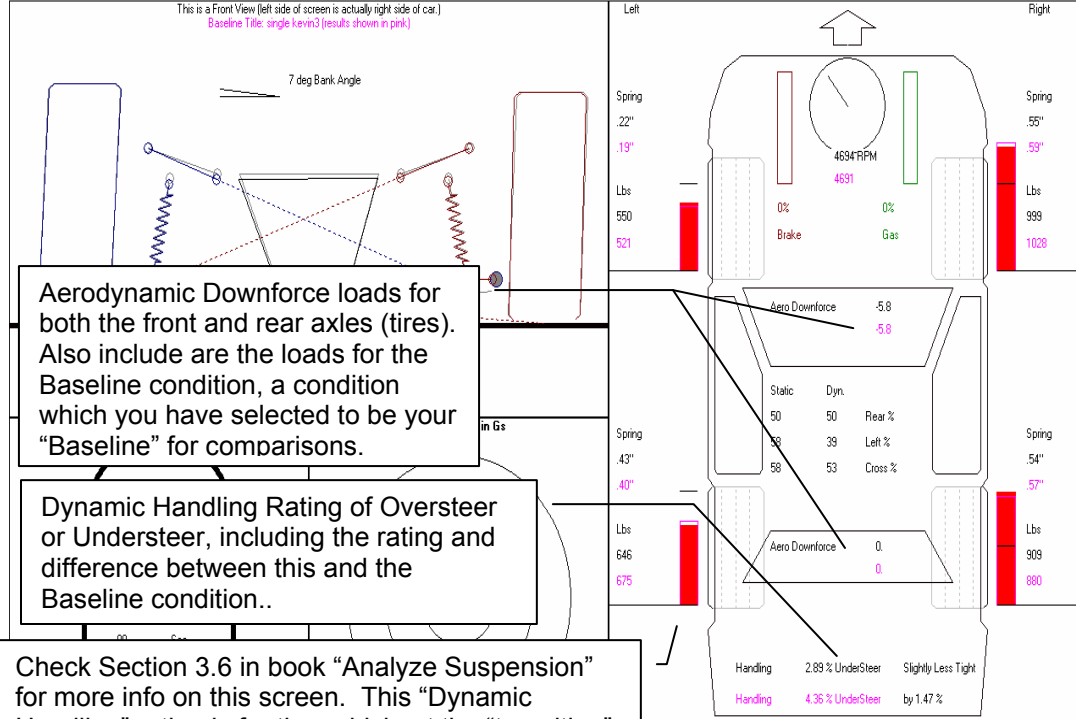
Report on Details Help
 Find 'Classic' Handling
 Show 'Dynamic' Handling

Dynamic Handling rating of 2.74% Understeer, which includes cross weight, aerodynamic, and other effects. Note that this is completely different than the "Classic" handling rating which only considers lateral load (weight) transfer.

Click here to update the "Dynamic Handling" rating and to display the screen below

Circle Track Analyzer v3.5 Suspension Analysis Screen [LATEMODL.355]

Back Options Print Reports Help



Aerodynamic Downforce loads for both the front and rear axles (tires). Also include are the loads for the Baseline condition, a condition which you have selected to be your "Baseline" for comparisons.

Dynamic Handling Rating of Oversteer or Understeer, including the rating and difference between this and the Baseline condition..

Check Section 3.6 in book "Analyze Suspension" for more info on this screen. This "Dynamic Handling" rating is for the vehicle at the "transition" point, between braking and accelerating, no fore or aft acceleration.

Figure A19 Oversteer/Understeer Rating Around the Entire Track, and Big Bar Soft Spring Starting Pont Suggestions

Circle Track Analyzer v3.6 Performance Trends [LATEMODL.355]

Back Graph Print Analyze Suspension Analyze Perf History Help(F1)

Notes Summary: Low Lift Coef. Aggressive Driving New Lap Time 19.36 MPH 93.0
 Engine RPM High

Time Feet MPH Accel Gs %

.00 0 65.5 .00 0

After you Calculate Lap Times, click on Analyze Suspension for the screen below.

Circle Track Analyzer v3.5 Suspension Analysis Screen [LATEMODL.355]

Back Options Print Reports Continuous Single Step Ahead Single Step Back Help

Suspension Calculations
 Suspension Calculations with Comments
 Rule of Thumb' Suggestions - Std Setup
 Rule of Thumb' Suggestions - BBSS Setup
 Rule of Thumb' Adjustments
 Write ASCII File of BASELINE Wheel Loads

When is actually right side of car.
 (results shown in pink)

Click on Reports, then 'Rule of Thumb' Suggestions for either a Std Setup or the new BBSS Setup. The program will create the report like shown below with spring, roll bar, stagger, anti-dive and other recommendations for either type of setup you want to run.

Roll: 0.11 deg 0.38
 Roll Camber: 4.97 deg -3.42
 Dive: 1.52 inches 0.51
 Li Camber: .63 deg 1.72

Turn 2 Turn 1
 74.4 MPH
 65.5
 2546 Feet
 2513
 18.43 Sec
 0.00
 Turn 3 Turn 4
 Baseline is an undetermined car length ahead

Friction Circle in Gs
 Accelerating
 1.5 1.0 5
 Braking

Aero Downforce	-7.5	
	-5.8	
Static	Dyn.	Rear %
50	40	
58	42	Left %
58	52	Cross %

Spring
 .89"
 43"
 Lbr
 513
 645

Spring
 -.26"
 54"
 Lbr
 700
 909

Aero Downforce 0.
 0.

Handling 27.12 % UnderSteer Very Much Tighter
 Handling 2.74 % UnderSteer by 24.38 %

Suspension Report.txt - Notepad

File Edit Format View Help

Report is shown in Notepad so you can easily copy and paste, email, or print it on most any printer.

Big Bar Soft Spring (BBSS) ASPHALT Track Recommendations for: LATEMODL.355

These recommendations should work well as a starting point for beginner racers. Experienced drivers may want to adjust these specs for their own driving preferences. The following recommendations are based on the current vehicle, front and rear suspension, and track specs. These recommendations are based on 'rules of thumb'